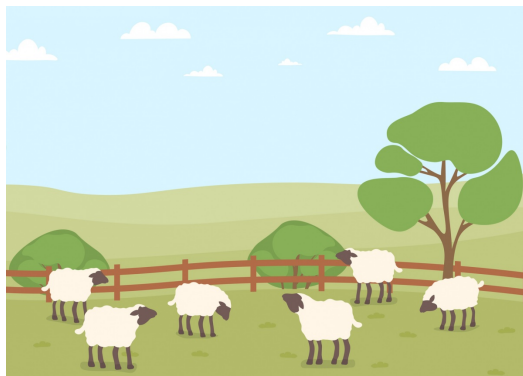


Working out stock rates

This task is about solving maths problems involving rates.



Tana has a paddock on each side of his house.
The table shows the area of each paddock, and how many sheep are in each.

	Paddock Name			
	East	West	South	North
Area (in hectares)	3.7	18.4	6.4	5.7
Number of sheep	23	128	50	36

The **stock rate** is the number of sheep per hectare.

- a) What is the stock rate of
- i) the North paddock? _____ sheep per hectare (to 1 d.p.)
 - ii) the South Paddock? _____ sheep per hectare (to 1 d.p.)
- b) What is the overall stock rate over all four paddocks?

Overall stock rate = _____ sheep per hectare (to 1 d.p.)

- c) The maximum recommended stock rate for winter is 7 sheep per hectare.
How many sheep need to be shifted from the South paddock for winter?

There will need to be _____ sheep shifted.