

What number?

This task is about using clues to work out a number.

a)



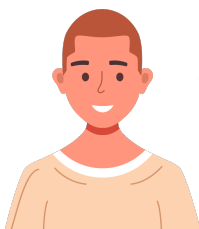
I'm thinking of a number between 30 and 50, and when divided by 6 and 7, has no remainder. What is the number?

b)



I'm thinking of a number between 60 and 90, when divided by 8 and 9, has a remainder of 1. What is the number?

c)



I'm thinking of a number between 100 and 130, when divided by 3, 5, and 8, has a remainder of 2. What is the number?

Published on *Assessment Resource Banks* (<https://arbs.nzcer.org.nz>)