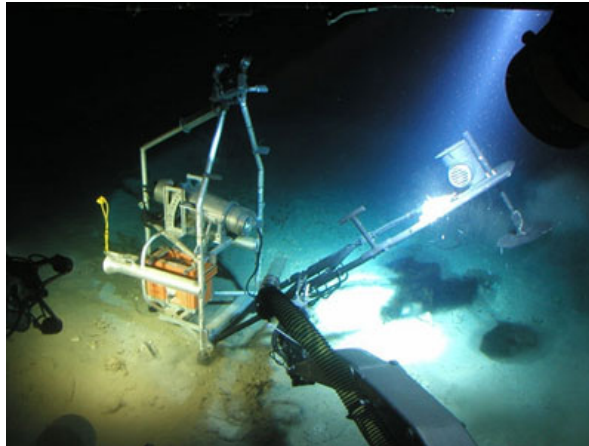


# Ocean depths

---

This task is about significant figures.



The deepest parts of the ocean floor are in the Pacific Ocean. These are given particular names, for example *Challenger Depth*. Answer these questions about each of these depths.

a) The deepest part of the ocean floor is Challenger Depth which is 11,022 metres.

How many significant figures are there in this number? \_\_\_\_\_

b) Round each of these depths to **2** significant figures (2 s.f.).

i) Johnson Depth is 10,497 metres = \_\_\_\_\_ metres (2 s.f.)

ii) Planet Earth Depth is 9,140 metres = \_\_\_\_\_ metres (2 s.f.)

iii) Vityaz Depth is 10,542 metres = \_\_\_\_\_ metres (2 s.f.)

c) Round each of these depths to **3** significant figures (3 s.f.).

i) Nero Depth is 9,637 metres = \_\_\_\_\_ metres (3 s.f.)

ii) Horizon Depth is 10 882 metres = \_\_\_\_\_ metres (3 s.f.)

Published on <https://newzealandcurriculum.tahurangi.education.govt.nz>