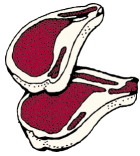


# Weighing meat

This task is about weight.

Here are some packs of meat in the supermarket.

**BBQ**



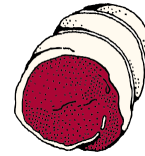
0.450 kg

**Steak**



0.850 kg

**Roast**



1.2 kg

**Beef**



0.352 kg

**Sausages**



0.56 kg

a) Which pack of meat is the heaviest? *BBQ/ Steak/ Roast/ Beef/ Sausages*

b) A recipe uses 1 kilogram of beef.

How many packets of the beef would you need to buy?

c) Write the weight in grams of

i) the beef (0.352 kg)  grams

ii) the roast (1.2 kg)  grams

iii) the sausages (0.56 kg)  grams

d) Which pack of meat is closest to 1 kg? *BBQ/ Steak/ Roast/ Beef/ Sausages*

Published on <https://newzealandcurriculum.tahurangi.education.govt.nz>