

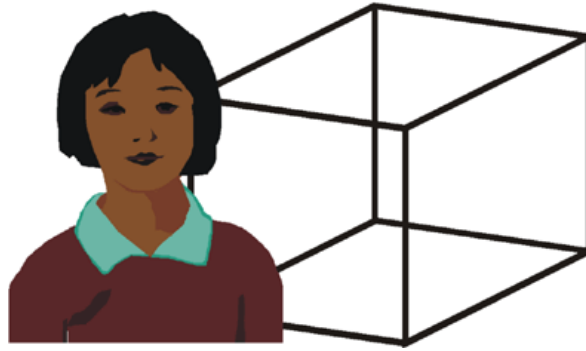
# Whetu's frame

---

This task is about edges and corners of a cube.

## Questions/instructions

Whetu wants to make a cube shaped frame.  
She will make it with plastic piping.  
Each edge will be 1 metre long.



- a) How much pipe does she need?  metres
- b) What is the smallest number of corners she needs to use to make the frame?

Published on *Assessment Resource Banks* (<https://arbs.nzcer.org.nz>)