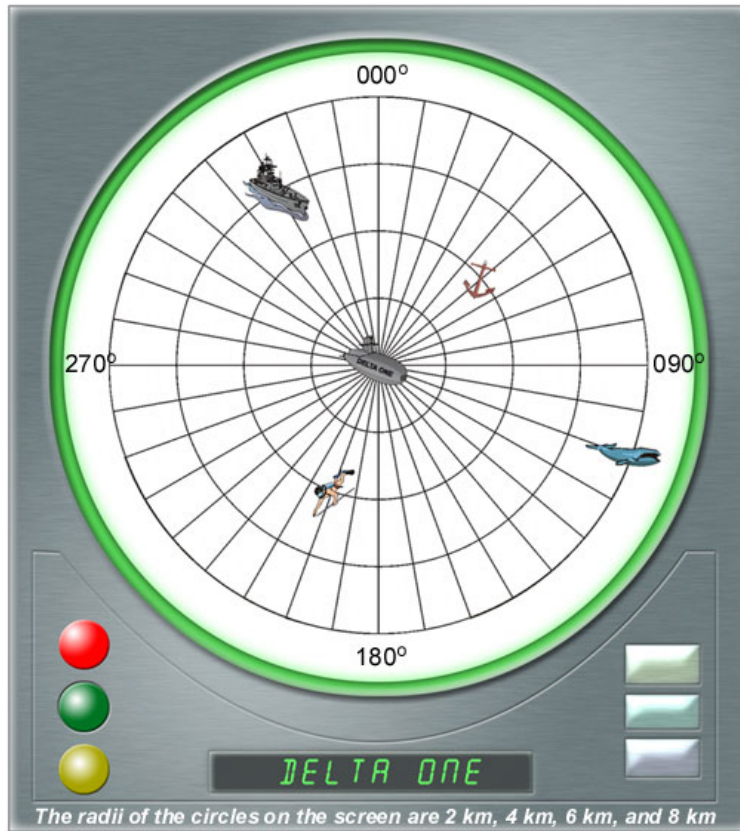


# Distance and bearing

This task is about bearing and distance on a radar.



The radar on the submarine Delta One can detect objects up to 8 kilometres away. For each object on the radar screen, write in the table below its **distance** from the submarine and its **bearing**.

Object	Distance from the submarine (kilometres)	Bearing on the radar (degrees)
Anchor	<input type="text"/> km	<input type="text"/> °
Diver	<input type="text"/> km	<input type="text"/> °
Whale	<input type="text"/> km	<input type="text"/> °
Battleship	<input type="text"/> km	<input type="text"/> °