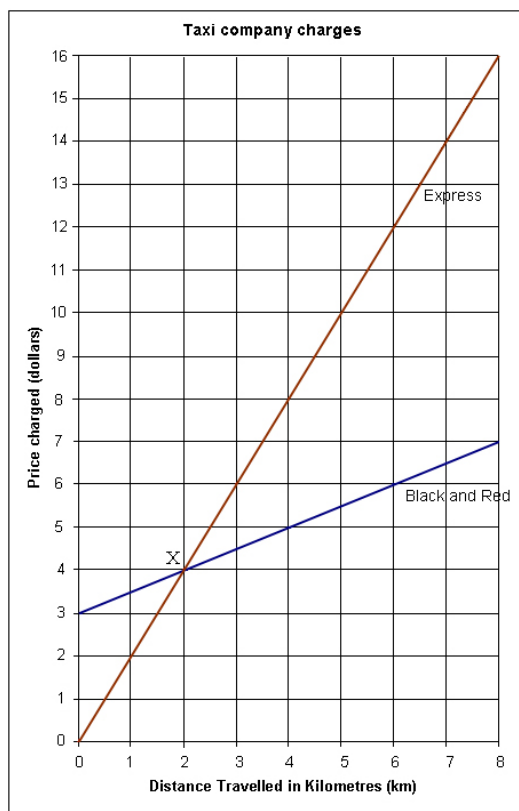


Taxi charges

This task is about reading information from a graph.



On Friday nights Shane catches a taxi home. The graph shows the prices charged by two different taxi companies - Black and Red Taxis and Express Taxis. Use the graph to answer the questions that follow.

a) If Shane had only \$6.00, how far could he be travelled if Black and Red Taxis were used?
_____ km

b) Which taxi company would be cheaper, and by how much, if Shane was travelling 8 kilometres?

_____ would be cheaper by \$ _____

c) Point X on the graph is where the 2 lines cross. What does point X represent?

d) Let C = "price charged" and k = "number of kilometres". Complete an equation to show what each taxi company charges.

i) Express Taxis: $C =$ _____

ii) Black and Red Taxis: $C =$ _____