

Internet cost

This task is about comparing different prices for internet access.

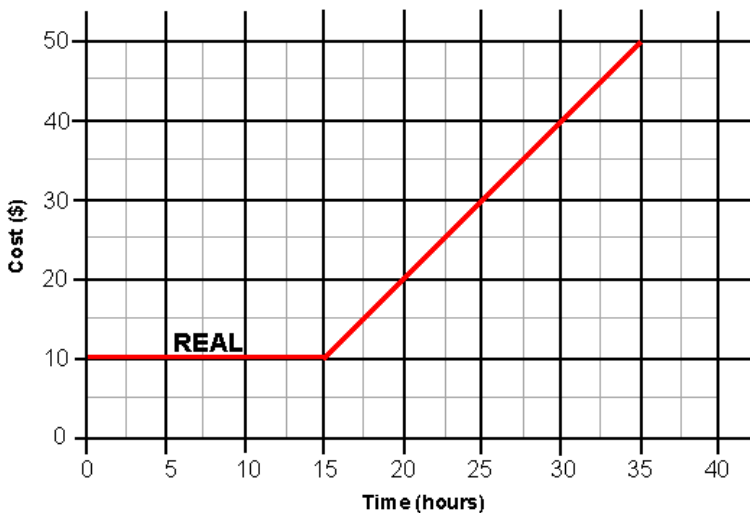
Three companies offer different plans to access the Internet. Here are their **monthly** charges.

- SHARP charge \$1.50 per hour.
- REAL charge a \$10.00 fee for up to 15 hours use and \$2.00 per hour after that.
- WINS charge \$2.00 per hour for the first 10 hours and \$1.00 per hour after that.

What would it cost you if you used 20 hours of access time one month and used the scheme offered by

- a) i) SHARP? \$ _____
ii) REAL? \$ _____
iii) WINS? \$ _____

Cost of Internet for the time used per month



- This graph shows the cost of Internet use with the company REAL for different levels of monthly usage. On this graph draw the lines showing the Internet costs using the other **two** companies.

Which company would be cheapest if your average monthly Internet use was

- c) i) 10 hours? _____
ii) less than 5 hours? _____