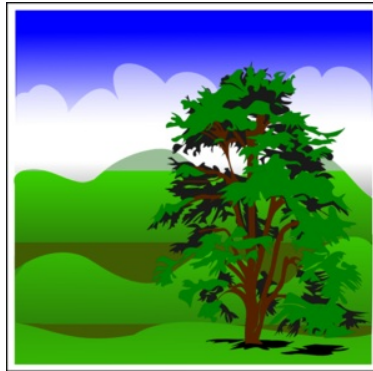


Seasons of the year

This task is about using descriptions of events to identify seasons.



a) Write down the names of the **four** seasons we have in a year.

b) In which season do we get the coldest weather?

c) In New Zealand the months of December, January and February make up the season called ...

d) Which season is it now?

e) Which season comes before summer?

f) In which season do the leaves of some trees change colour from green to red?

g) Name the season when we have the hottest days.