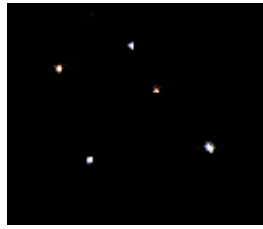


Stargazing

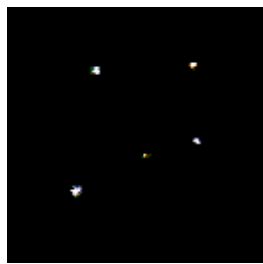
This task is about how the night sky changes during the night.

- a) On fine nights the Southern Cross can be seen clearly.
When viewed early in the evening it looks like this:



Source: NASA

But when seen at around 3 or 4 a.m. the same night, it looks like this:



Source: NASA

Why does the Southern Cross look different later in the night?

- The stars go around in a huge circle in the night sky.
- Stars revolve around each other in the universe.
- Stars move with the Earth as it turns.
- The Earth turns on its axis every 24 hours.

- b) Antares is a prominent red star in the constellation Scorpio.
Its colour indicates that, compared with the Sun which is a yellow star, it is ...

- larger
- smaller
- hotter
- cooler
- more distant