

Giving directions

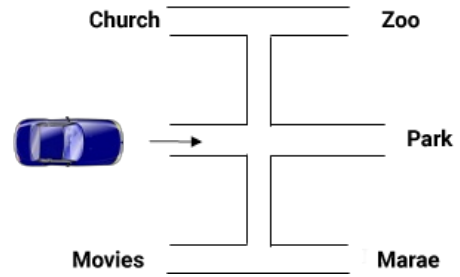
This task is about getting and giving directions using left, right, and straight ahead.

a) A blue car is driving down the road.

At the first corner it turns to its right.

It drives on to the next corner.

The car then turns to its left and goes straight ahead.



Where does the blue car get to?

the movies

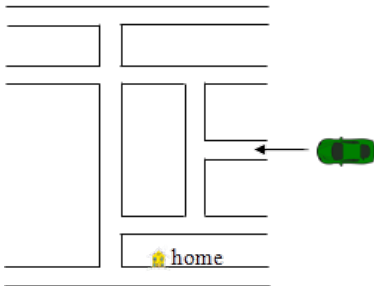
the church

the marae

the park

the zoo

b) This map shows where a green car is.



Write down the directions for the shortest way for the green car to drive along the streets to home (use the words "right" and "left").