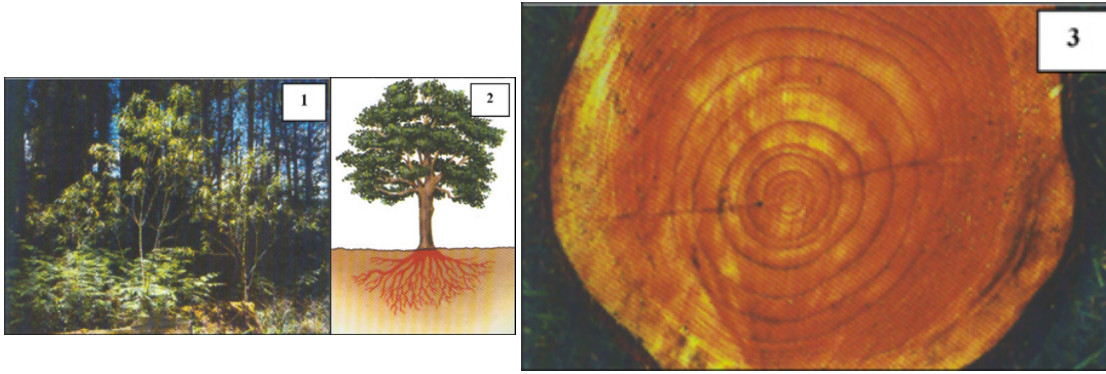


Growing in the forest



Source: NEMP Report

13: Science 1999, Page 16.

In this activity we will be thinking about the New Zealand bush. Here is a picture showing a young tree growing in the forest.

Show picture 1. I want you to think about how the forest helps and protects a young tree as it grows. Point to the young tree in the picture.

- How might this tree have got there? Prompt: What might have made it grow there?
- How does the forest help the young tree to grow?

Now let's talk about the different parts of the trees. Look carefully at this picture of a big tree to help you answer the questions.

Show student picture 2. Point to the roots.

- Here are the tree roots. How do the tree roots help the tree to live and grow?

Point to the leaves.

- Now look at the leaves of the tree. How do the leaves help the tree live and grow?

Give the student picture 3. Look carefully at this picture of the tree trunk. Point to the bark layer.

- Try to explain to me the main jobs of the bark layer.

Point to the rings in the trunk of the tree.

- Try to explain to me what these rings might mean.