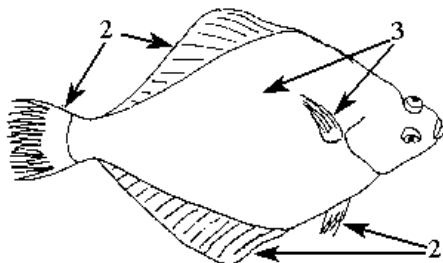


Fish camouflage

Colour in each fish by following the instructions beside it. Then answer the question below each fish.

Flatfish



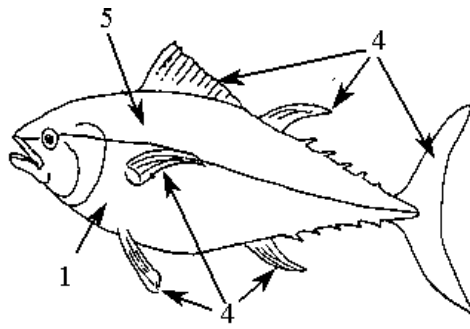
2 = light brown

3 = dark brown

When you have finished colouring this fish put some small dark red patches all over it.

a) This fish lives on the bottom of shallow seas. How does its colour help it survive?

Tuna



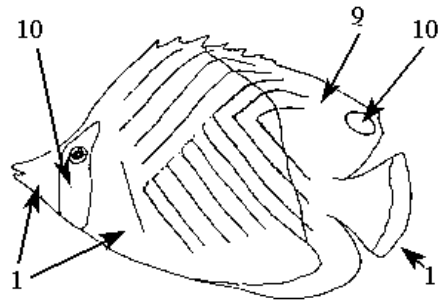
1 = leave this part white

4 = dark blue

5 = blue

b) Why would a fish-eating bird have trouble seeing this fish when it is flying above it?

Butterfly fish



1 = leave this part white

9 = yellow

10 = black

c) The eyes of this fish are protected in two ways. Explain one way this has been done.