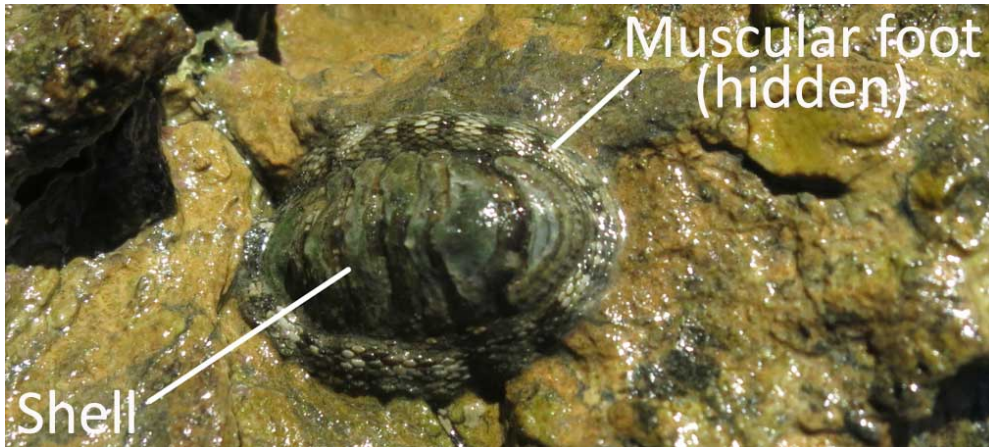


A chiton

This task is about identifying features that help to protect an animal in its particular environment.

This small animal (chiton) lives on the tops and sides of rocks found between low and high tide marks.



a) Explain **two** ways in which this animal protects itself from waves that break over the rocks.

1.

2.

b) Explain **two** ways in which this animal protects itself from predators that want to eat it.

1.

2.

Published on Assessment Resource Banks (<https://arbs.nzcer.org.nz>)