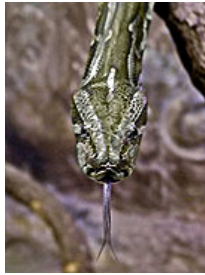


Animal tongues

This task is about special features of animals.



The main uses of an animal's tongue are to taste food and to help it drink. In some animals the tongue is also used for other things.

Complete the chart to explain the purpose of the special features of the tongues of the animals listed.

Animal	Special feature	How its tongue helps the animal survive
a) Giraffe	Very long dark coloured tongue	
b) Snake	Long tongue, often with a forked tip, which darts in and out	
c) Dog	Long, flexible tongue that frequently flops or hangs out of the mouth	

Published on <https://newzealandcurriculum.tahurangi.education.govt.nz>