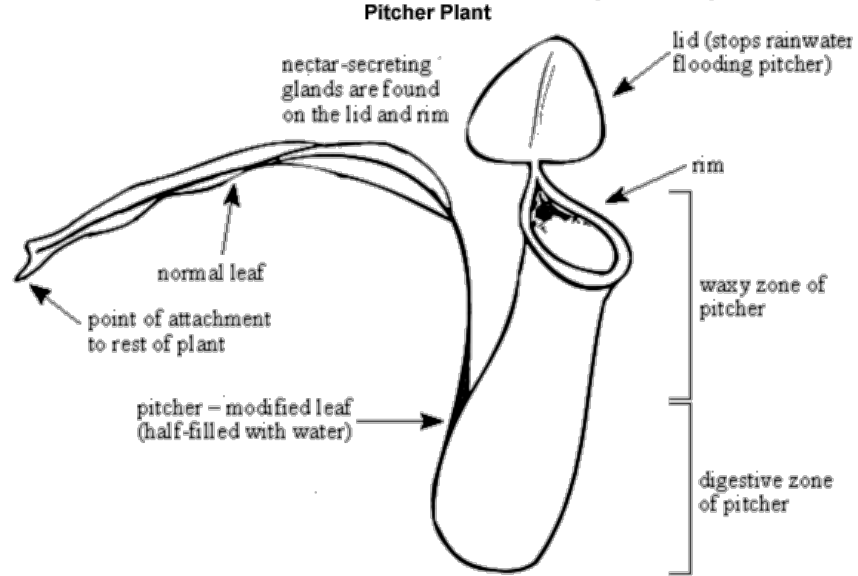


# Pitcher plant

This task is about the features of a pitcher plant.



Insects are attracted to the pitcher(s) on the carnivorous pitcher plant. Once inside they are unable to get out and will die and then decompose.

a) How does the plant attract insects to it?

b) How do the following features help the plant to be successful in its carnivorous way of life?

i) Waxy insides of the pitcher:

ii) Pitchers are half-filled with water: