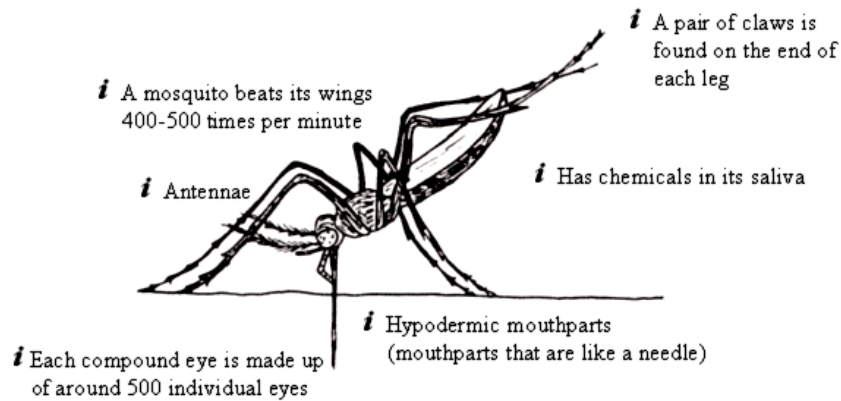


# Features of the mosquito

This task is about how features of a mosquito help it to survive.



Use any three of the features that are listed or drawn, to complete the following chart. An example has been done for you.

## Feature

Claws

## How does it help the mosquito survive?

Used to help mosquito grip surface.

*Eyes/ Mouth/ Antennae/ Wings/ Saliva*

*Eyes/ Mouth/ Antennae/ Wings/ Saliva*

*Eyes/ Mouth/ Antennae/ Wings/ Saliva*