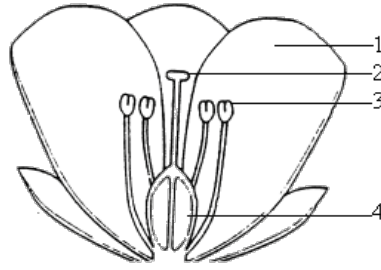


# Flowers and seeds

This task is about parts of a flower, pollination and seed dispersal.



a) Match the parts of this flower with the correct number from the diagram.

Flower part	Number
Anther(s): where pollen grains are produced.	1/ 2/ 3/ 4
Ovary: where the seeds will develop.	1/ 2/ 3/ 4
Petal(s): often brightly coloured (to help attract insects).	1/ 2/ 3/ 4

b) In the process of pollination, pollen must be transferred from the male part of the flower to the female part of another or the same flower.

Give **two** ways that the pollen can be transferred.

- 
- 

c) Plants need to form seeds. They also need to have these seeds dispersed away from the parent plant.



The diagram shows five different seeds.

Choose any **two** and state how that seed is spread away from the parent plant.

**Seed number**

**How the seed spreads away from the parent plant**

1/ 2/ 3/ 4/ 5

1/ 2/ 3/ 4/ 5