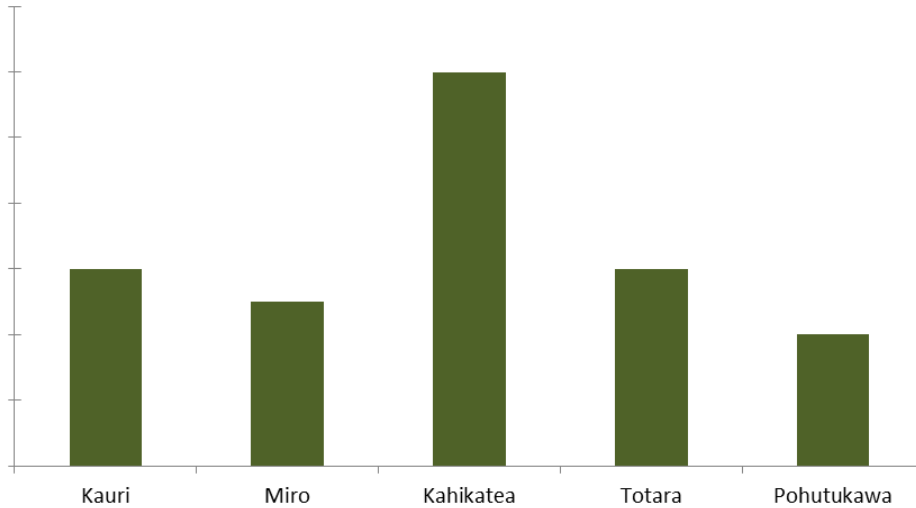


# Native trees

This task is about graphs.



This graph has been drawn by a student to show how high some New Zealand native trees can grow. The student has not finished the graph.

a) Write **three** things the student could put onto the graph so it would be finished and make more sense.

1.
2.
3.

b) What type of graph is this?

- Line graph
- Bar graph
- Picture graph
- Pie graph

c) Why is it useful to have graphs?