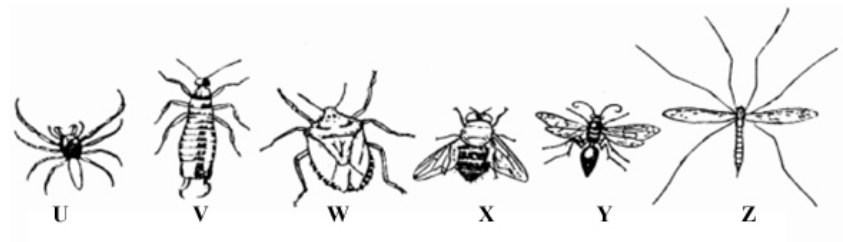


Identity parade

This task is about using a classification key to identify insects and spiders.



These are all New Zealand small native animals.
Use the identification key below to answer the questions.

STEP 1	(i) wings (ii) no wings	Go to Step 2 Go to Step 5
STEP 2	(i) wings extend straight out (ii) wings do not extend straight out	Go to Step 3 Go to Step 4
STEP 3	(i) hind legs extend beyond body (ii) hind legs do not extend beyond body	Cranefly Hunter wasp
STEP 4	(i) wings cover abdomen completely (ii) wings do not cover all of abdomen	Shield-bug Bluebottle
STEP 5	(i) six legs (ii) eight legs	Earwig Leaping spider

- a) What is Animal V? _____
- b) Which animal is a cranefly? _____
- c) From the key work out how many animals have wings. _____
- d) What are the features of a leaping spider?
