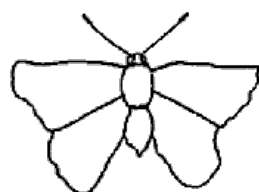
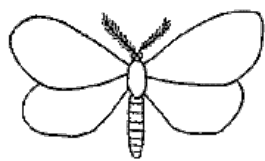
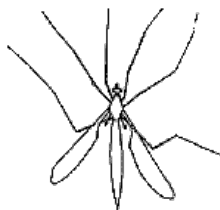


# Types of insects

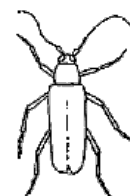
This task is about identifying common and different features used to classify some insects.



**Sub group A**  
(legs underneath)



**Sub group B**



**Sub group C**

*[Not drawn to scale]*

a) All the animals drawn are insects.

What are **two** features that separate insects from all other animals?

1.

2.

b) These animals belong to three different subgroups of insects labelled A, B, and C.

i) Apart from any size differences, and the fact that the legs can't be seen in A, what is the main difference you can see between subgroup A and B?

ii) In subgroup A there are two insects shown.

What feature could be used to distinguish between these two?

c) i) What are the insects of subgroup C known as?

ii) The outer wings in subgroup C are hard coverings; there is another pair of wings underneath.

What is the purpose of the hard outer wings?

Published on *Assessment Resource Banks* (<https://arbs.nzcer.org.nz>)