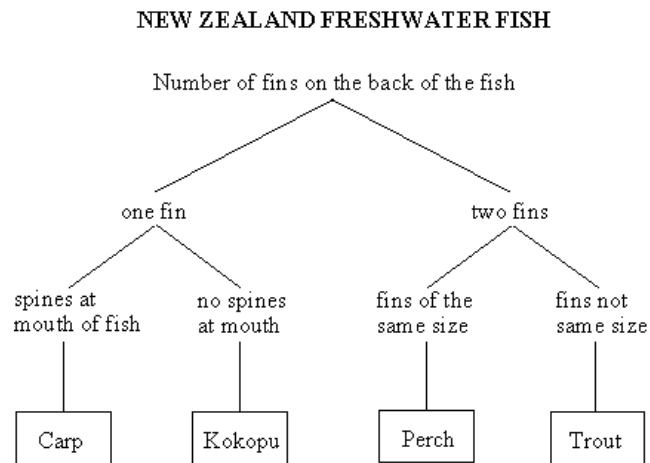


Identifying fish and shellfish

This task is about using a classification key to identify animals.

a)



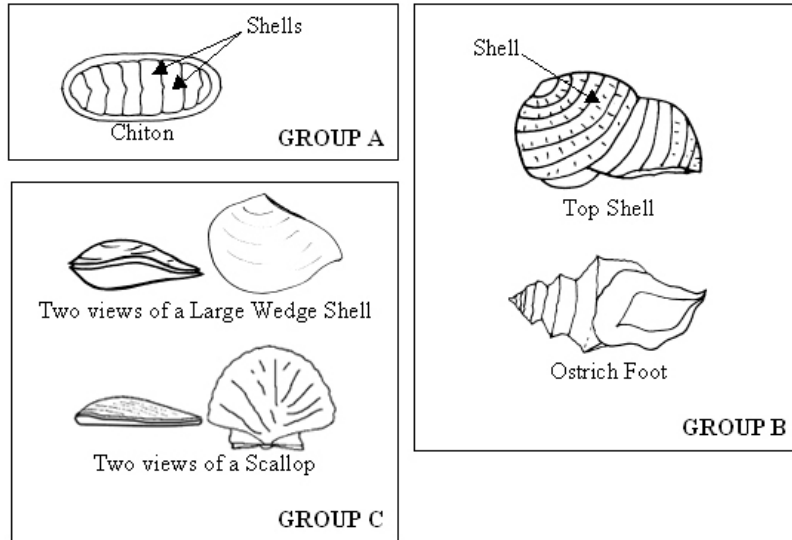
Use the chart above to identify this fish.



The fish shown is a ...

- (A) trout.
- (B) kōkopu.
- (C) perch.
- (D) carp.

b)



[NOT DRAWN TO SCALE]

These molluscs belong to three different groups: A, B, and C.

i) What feature do all these animals have in common? _____

ii) Complete the spaces i) to vii) so that someone would be able to identify these five animals.

