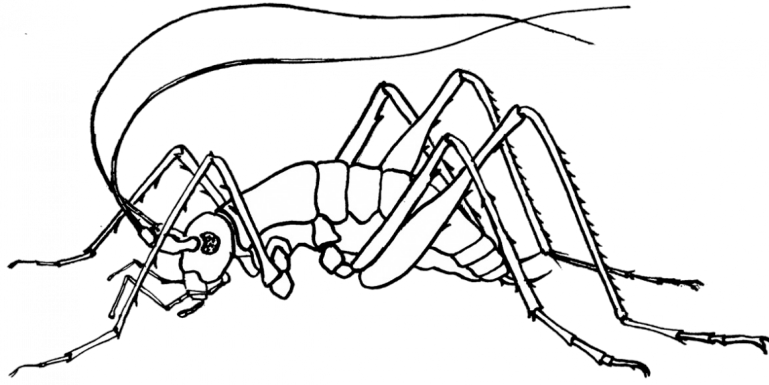


Is a wētā a spider or insect?

This task is about classifying wētā.



A wētā was found on Mr Ropitini's driveway.
His daughter April thought it was a spider.
Her father said it wasn't a spider, it was an insect.

- a) When scientists decide what group an animal belongs to, they look at all its features.
In the chart below are features of spiders and insects that we can see by looking at them.
Look at the wētā and highlight on the chart the features it has.

Spiders	Insects
8 legs	6 legs
2 parts to body	3 parts to body
	antennae (feelers)
skeleton on the outside	skeleton on the outside

- b) Select the right word to finish the sentence.

A wētā is *a spider* / *an insect*

- c) What is one thing that is the same about insects and spiders?